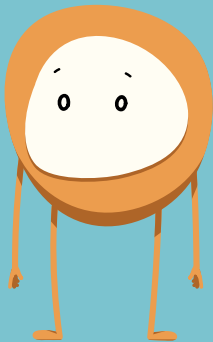


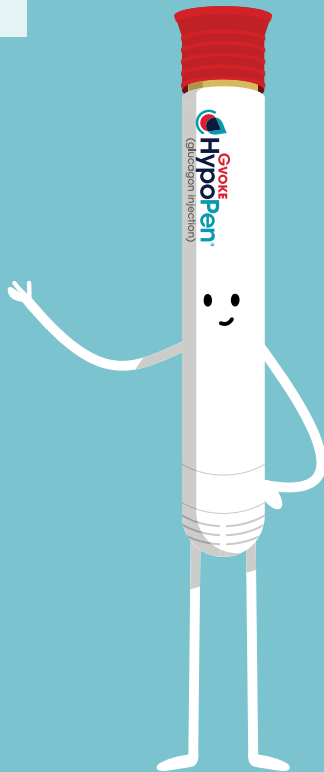


Your guide to
Gvoke HypoPen®

I'm worried about
my blood sugar
dropping too low.



Count on me to
bring it back up.¹

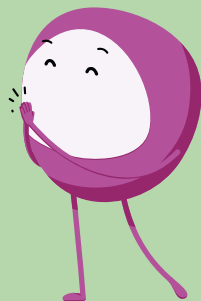


Please see Important Safety Information on last page and Full Prescribing Information [here](#).

You can count on me
when your blood sugar
goes very low.¹



I'm so glad you
came along.



GVOKE
HypoPen[®]
(glucagon injection)

Introducing Gvoke HypoPen[®]
The simple solution you can count on.¹⁻³



0.5 mg
for kids¹

1.0 mg
for adults¹

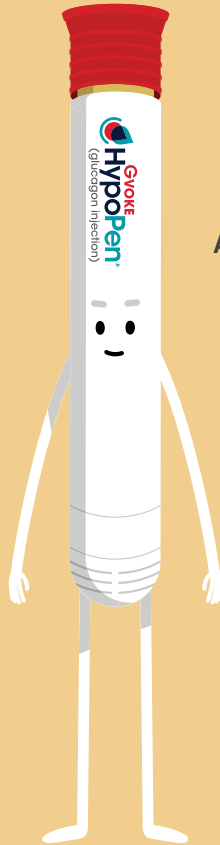
The first autoinjector for very low blood sugar
that's premixed and ready-to-go.^{1,3}

Important Safety Information

INDICATION AND SAFETY SUMMARY

GVOKE is a prescription medicine used to treat very low blood sugar (severe hypoglycemia) in adults and kids with diabetes ages 2 years and above. It is not known if GVOKE is safe and effective in children under 2 years of age.

Sometimes I feel like
I might pass out.²



Always keep me
close by.



Gvoke HypoPen helps take the guesswork out of
managing very low blood sugar.^{1,3}

99% of people were able to give Gvoke HypoPen correctly, in a study.^{4*}

Gvoke HypoPen can be used when you
experience any of the following²:

- have repeatedly tried correcting with food or drink and it isn't working
- are unable to swallow safely
- feel like you/they might pass out
- experience loss of consciousness or a seizure

**If not treated, very low blood sugar may lead to confusion,
seizures, unconsciousness or death.²**

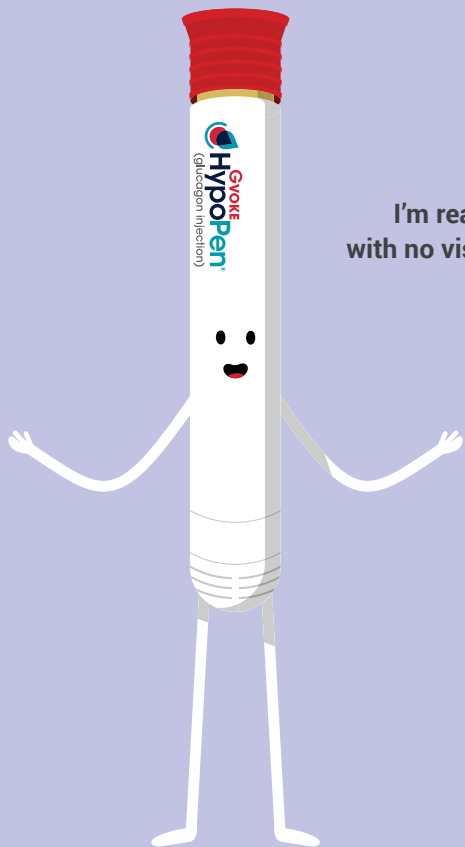
*Usability study with simulated emergency conditions.

Important Safety Information (continued)

WARNINGS

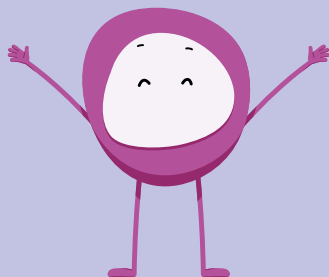
Do not use GVOKE if:

- you have a tumor in the gland on top of your kidneys (adrenal gland), called a pheochromocytoma.
- you have a tumor in your pancreas, called either an insulinoma or a glucagonoma.
- you are allergic to glucagon or any other inactive ingredient in GVOKE.



I'm ready to use,
with no visible needle.¹⁻³

That's easy to love!



Anyone can use Gvoke HypoPen in 2 simple steps.²⁻⁴

You can even give Gvoke HypoPen to yourself in certain situations.²

1

Pull red
cap off.



2

Push yellow
end down on skin and hold
5 seconds. Window will turn red.



Administer into upper arm, stomach,
or thigh.

After using Gvoke HypoPen, turn person on their side if they have passed out or are seizing. Call for emergency help.²

Please see Gvoke HypoPen Instructions for Use for full detailed instructions at GvokeGlucagon.com.

Show those around you how to use Gvoke HypoPen before an emergency happens.

They may need to administer it if you have a severe low blood sugar event.²

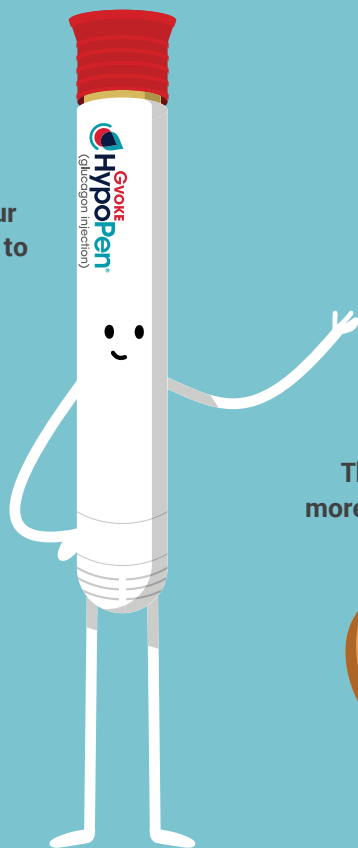
Important Safety Information (continued)

GVOKE MAY CAUSE SERIOUS SIDE EFFECTS, INCLUDING:

High blood pressure. GVOKE can cause high blood pressure in certain people with tumors in their adrenal glands.

Low blood sugar. GVOKE can cause low blood sugar in certain people with tumors in their pancreas.

I can bring your
blood sugar up to
safe levels.¹



That's why I feel
more secure with you.



Gvoke HypoPen is proven to work.¹

In clinical trials of adults:

99% of adults had their blood sugar raised to safe levels. Adults, on average, saw a blood sugar increase of 176 mg/dL after using Gvoke HypoPen (participants were fasting).^{1,5}

The most common side effects were nausea (30%), vomiting (16%), injection-site edema (raised 1 mm or greater) (7%), and headache (5%).¹

81% of side effects seen were mild.^{5*}

*Mild side effects were defined as those that did not interfere with the patient's usual function.⁵

Important Safety Information (continued)

Serious skin rash. GVOKE can cause a serious skin rash in certain people with a tumor in their pancreas called a glucagonoma.

Serious allergic reaction. Call your doctor or **get medical help right away** if you have a serious allergic reaction including:

- rash
- difficulty breathing
- low blood pressure

100% of kids had their blood sugar raised to safe levels with Gvoke HypoPen, in a clinical trial.^{1,5}

Pediatric Glucose Increases After Gvoke HypoPen^{1,5*}

Age Group	Average Increase
2 to <6 years	134 mg/dL
6 to <12 years	145 mg/dL
12 to <18 years	123 mg/dL

*Participants were fasting.

The most common side effects for kids were nausea (45%), hypoglycemia (39%), vomiting (19%), headache (7%), abdominal pain (3%), hyperglycemia (7%), injection-site discomfort (3%), injection-site reaction (3%), and urticaria (hives) (3%).¹

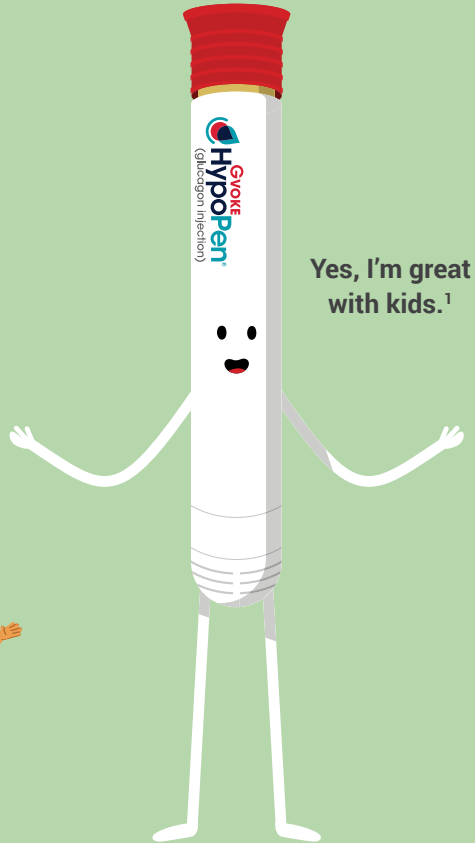
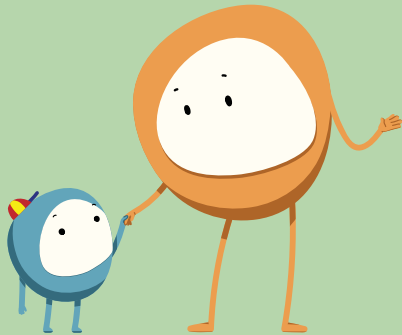
81% of side effects seen were mild.^{5*}

*Mild side effects were defined as those that did not interfere with the patient's usual function.⁵

Important Safety Information (continued)

These are not all the possible side effects of GVOKE. For more information, ask your doctor. Call your doctor for medical advice about side effects. **You are encouraged to report side effects of prescription drugs to the FDA. Visit www.fda.gov/medwatch, or call 1-800-FDA-1088.**

Can Junior use it, too?



Yes, I'm great with kids.¹



Gvoke HypoPen comes in a convenient 2-pack.

It's a good idea to tell your friends and family where you keep Gvoke HypoPen, just in case you can't give Gvoke HypoPen to yourself.

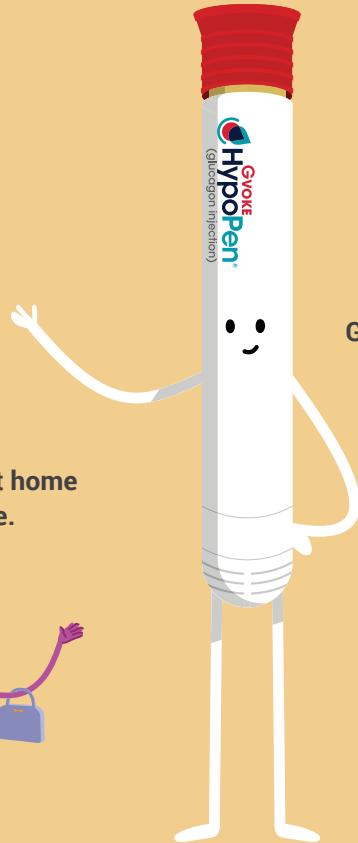
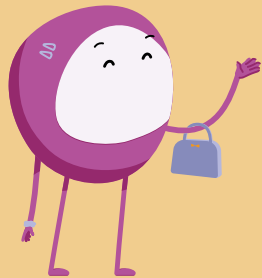


Important reminder: Store Gvoke HypoPen at room temperature (68°F-77°F) and in the original packaging.¹

To learn more, visit [GvokeGlucagon.com](https://www.GvokeGlucagon.com)

Please see additional safety information on next page.
Please see Full Prescribing Information [here](#).

I think I'll keep you at home
and at the office.



Good thinking!



INDICATION AND SAFETY SUMMARY

GVOKE is a prescription medicine used to treat very low blood sugar (severe hypoglycemia) in adults and kids with diabetes ages 2 years and above. It is not known if GVOKE is safe and effective in children under 2 years of age.

WARNINGS

Do not use GVOKE if:

- you have a tumor in the gland on top of your kidneys (adrenal gland), called a pheochromocytoma.
- you have a tumor in your pancreas, called either an insulinoma or a glucagonoma.
- you are allergic to glucagon or any other inactive ingredient in GVOKE.

GVOKE MAY CAUSE SERIOUS SIDE EFFECTS, INCLUDING:

High blood pressure. GVOKE can cause high blood pressure in certain people with tumors in their adrenal glands.

Low blood sugar. GVOKE can cause low blood sugar in certain people with tumors in their pancreas.

Serious skin rash. GVOKE can cause a serious skin rash in certain people with a tumor in their pancreas called a glucagonoma.

Serious allergic reaction. Call your doctor or **get medical help right away** if you have a serious allergic reaction including:

- rash
- difficulty breathing
- low blood pressure

COMMON SIDE EFFECTS

The most common side effects of GVOKE include:

- nausea
- vomiting
- swelling at the injection site
- headache

These are not all the possible side effects of GVOKE. For more information, ask your doctor. Call your doctor for medical advice about side effects. **You are encouraged to report side effects of prescription drugs to the FDA. Visit www.fda.gov/medwatch, or call 1-800-FDA-1088.**

BEFORE USING

Before using GVOKE, tell your doctor about all your medical conditions, including if you:

- have a tumor in your pancreas
- have not had food or water for a long time (prolonged fasting or starvation)

Tell your doctor about all the medicines you take, including prescription and over-the-counter medicines, vitamins, and herbal supplements.

HOW TO USE

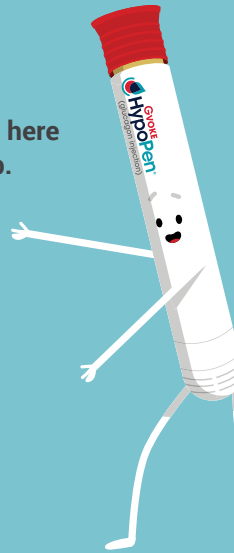
- Read the detailed Instructions For Use that come with GVOKE.
- Make sure your caregiver knows where you keep your GVOKE and how to use GVOKE correctly before you need their help.
- Your doctor will tell you how and when to use GVOKE.
- GVOKE contains only 1 dose of medicine and cannot be reused.
- After administering GVOKE, the caregiver should call for emergency medical help right away.
- If the person does not respond after 15 minutes, another dose may be given.
- Tell your doctor each time you use GVOKE.
- Store GVOKE at temperatures between 68°F and 77°F. Do not keep it in the refrigerator or let it freeze.
- Keep GVOKE in the foil pouch until you are ready to use it.

Keep GVOKE and all medicines out of the reach of children.

For more information, call 1-877-937-4737 or go to www.GvokeGlucagon.com.

Please see Full Prescribing Information [here](#).

I'm always here
to help.



Questions or want to learn more?
Visit us at [GvokeGlucagon.com](https://www.GvokeGlucagon.com)

References: 1. Gvoke [prescribing information]. Chicago, IL: Xeris Pharmaceuticals, Inc; 2019. 2. Gvoke HypoPen [instructions for use]. Chicago, IL: Xeris Pharmaceuticals, Inc; 2019. 3. Christiansen M, Cummins M, Prestrelski S, Junaidi MK. A phase 3 comparison of a ready-to-use liquid glucagon rescue pen to glucagon emergency kit for the symptomatic relief of severe hypoglycemia. Poster presented at: WCTD 2018; December 3-4, 2018; Vienna, Austria. 4. Valentine V, Newswanger B, Prestrelski S, Andre AD, Garibaldi M. Human factors usability and validation studies of a glucagon autoinjector in a simulated severe hypoglycemia rescue situation. *Diabetes Technol Ther.* 2019;21(9):522-530. 5. Data on file.

Gvoke®, Gvoke HypoPen®, Xeris Pharmaceuticals®, and their associated logos are trademarks of Xeris Pharmaceuticals, Inc. All other trademarks referenced herein are the property of their respective owners.

Copyright ©2020 Xeris Pharmaceuticals, Inc.
All rights reserved. US-GVKHP-20-00219 11/20

